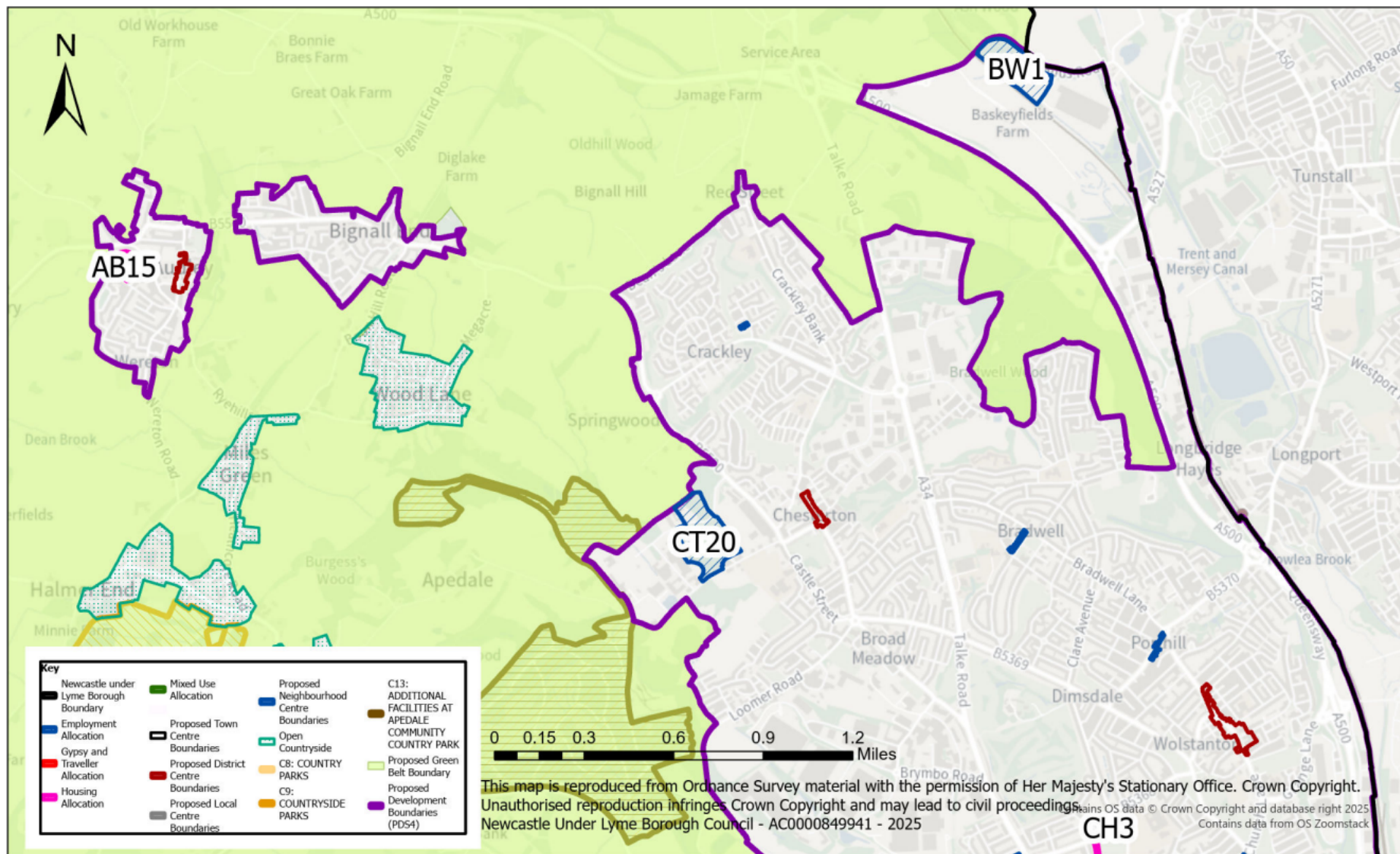


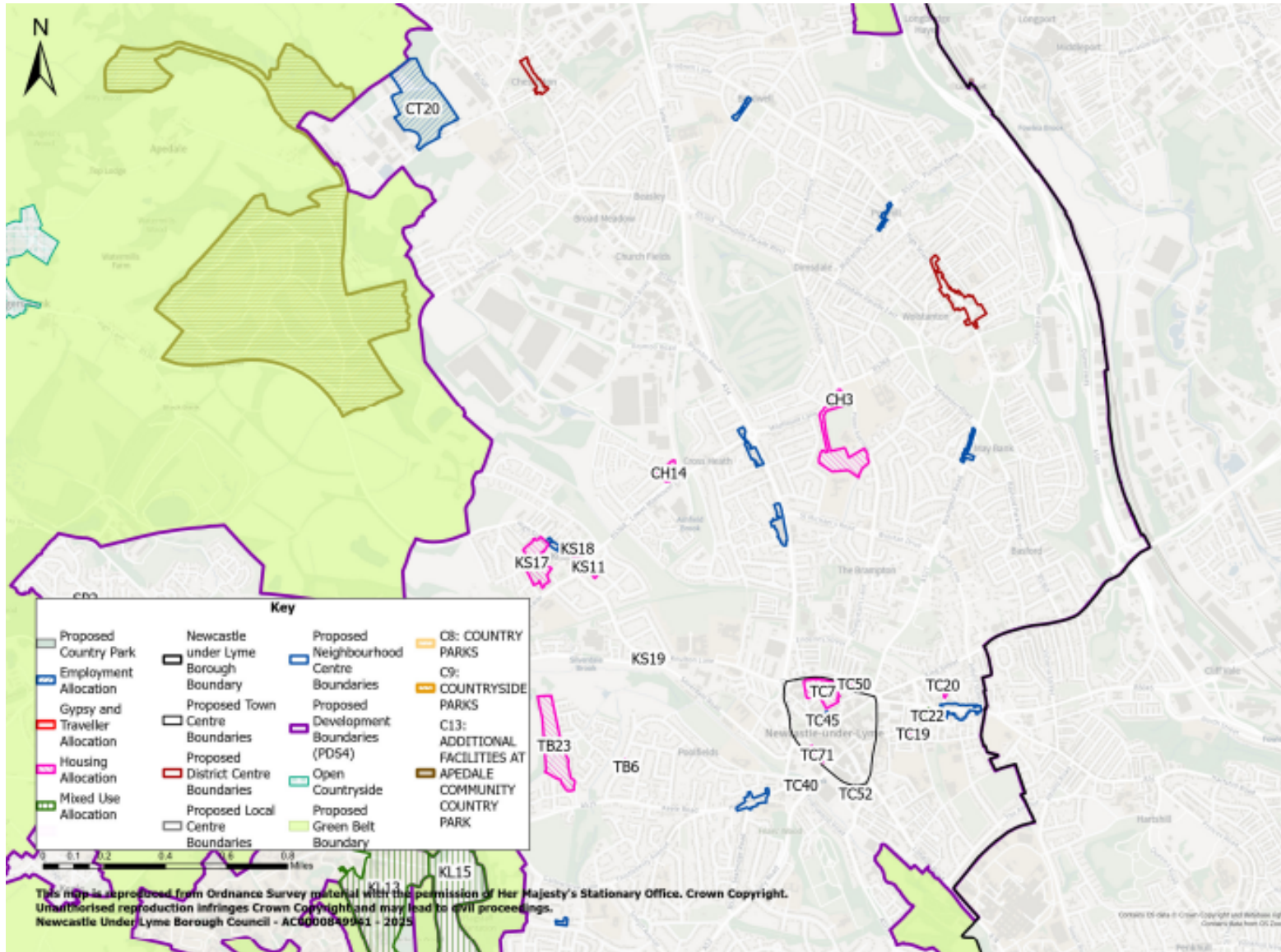
Policies Map Modifications

Modification Reference	Page Number	Policy / Paragraph / Map Reference	Policies Map Modification
PM01	2	Strategic Centre Map (1)	Removal of AB12 'land east of Diglake Street' and AB33 'Land off Nantwich Road / Park Lane, Audley' and site CT1 'Land at Red Street' from the Policies Map.
PM02	3	Strategic Centre Map (2)	Removal of CH13 'Castletown Grange', G&T Site 8 'Land West of Silverdale Business Park' and KS3 'Land at Blackbank Road' from the Policies Map.
PM03	3	Strategic Centre Map (3)	Alteration of Green Belt boundaries, the development boundary line for SP11 'Lyme Park' and removal of G&T Site 8 'Land West of Silverdale Business Park' from the Policies Map. Modification of the Green Belt boundaries within site TB19 'Land South of Newcastle Golf Club'. Insertion of safeguarded transport route between TB19 'Land South of Newcastle Golf Club' and KL13 'Keele Science Park, Phase 3' on the Policies Map.
PM04	6	Rural Centre – Audley & Bignall End Map (1)	Removal of AB12 'land east of Diglake Street' / AB33 'Land off Nantwich Road / Park Lane' from Policies Map.
PM05	9	Rural Centre – Keele Village (with University Hub) Map	Removal of Site 8 'Land West of Silverdale Business Park' from Policies Map. Alteration of development and Green Belt boundaries at site SP11 'Lyme Park'. Amendment to Green Belt Boundary at TB19 'Land South of Newcastle Golf Club' and insertion of safeguarded land transport route between site TB19 'Land South of Newcastle Golf Club' and KL13 'Keele Science Park, Phase 3'.

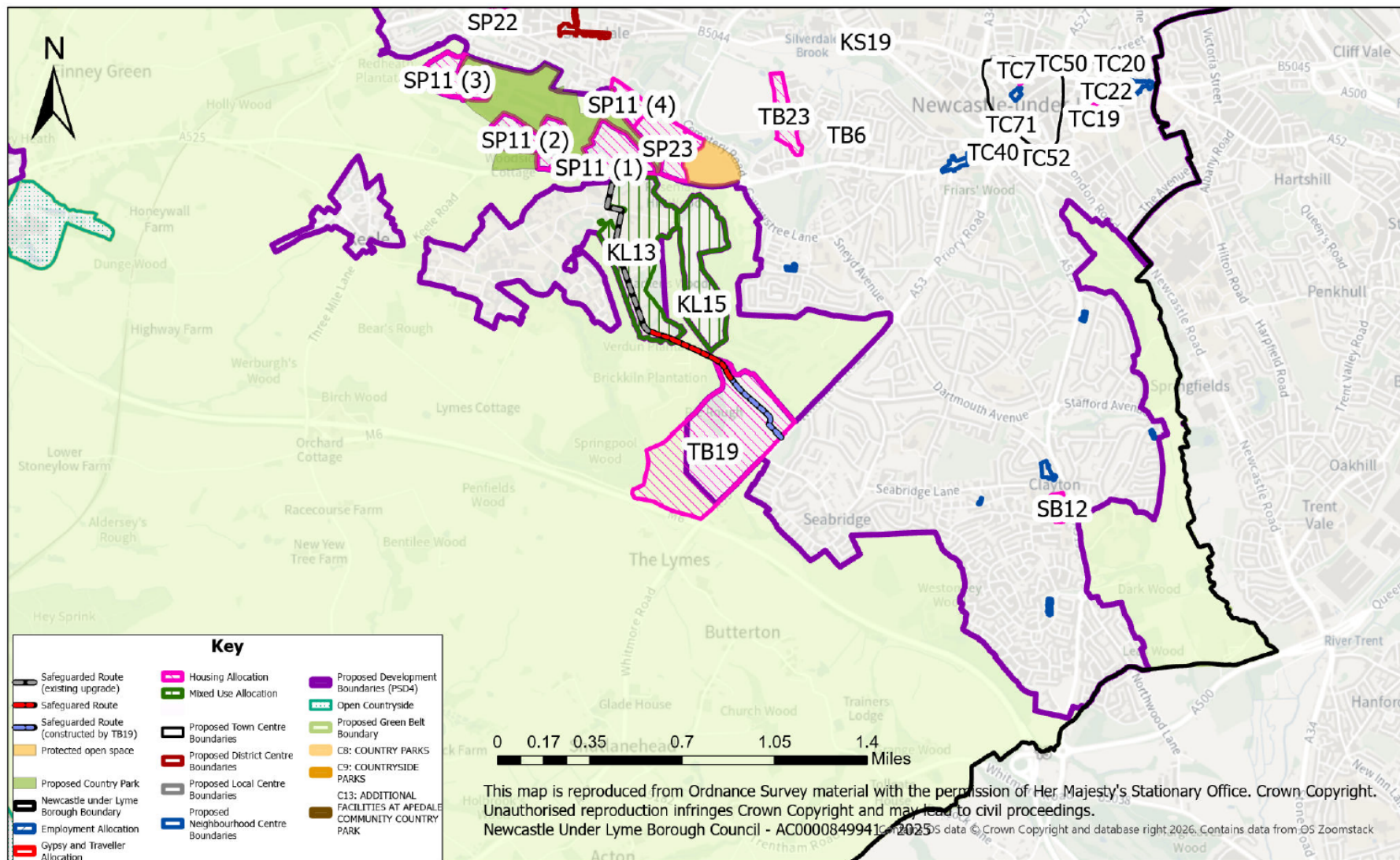
PM01 Strategic Centre Map (1) – plan amended to remove site AB12 ‘land east of Diglake Street’, AB33 ‘Land off Nantwich Road’ and CT1 ‘Land at Red Street’ from the Policies Map



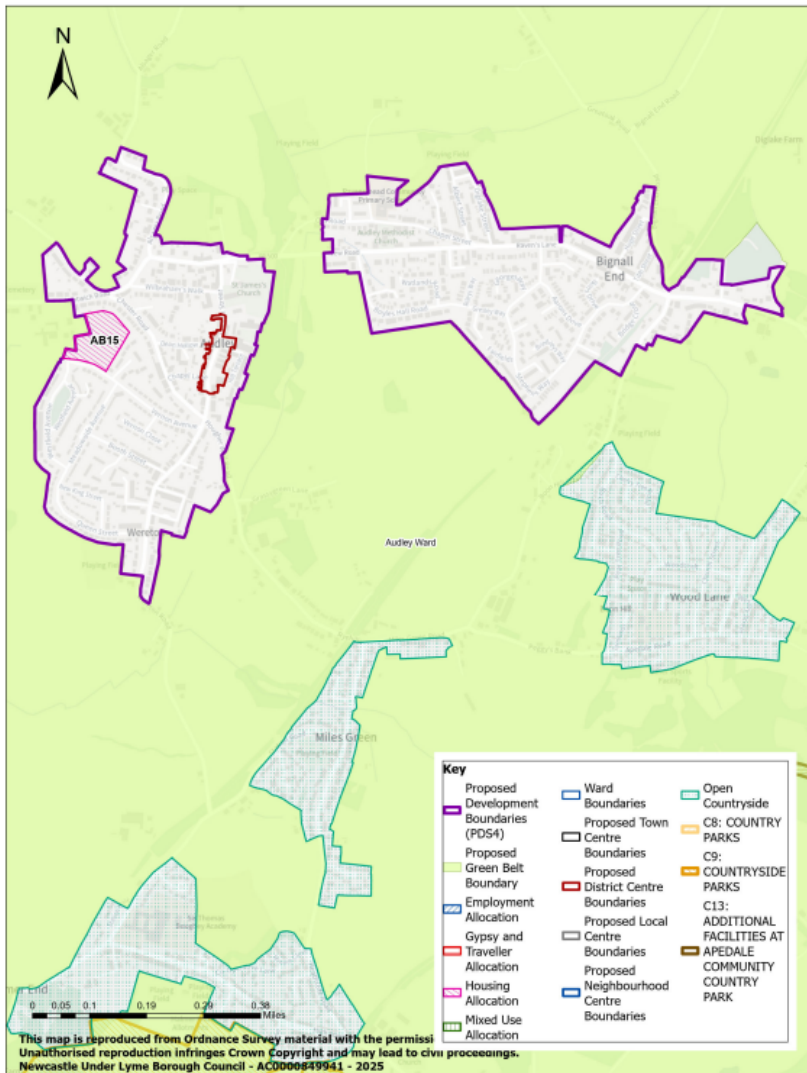
PM02 – Strategic Centre Map (2) – plan amended to remove CH13 ‘Castletown Grange’, G&T Site 8 ‘Land West of Silverdale Business Park’ and KS3 ‘Land at Blackbank Road’ from the Policies Map.



PM03 – Strategic Centre (3) – plan amended to reflect alteration of Green Belt boundaries, the development boundary line for SP11 ‘Lyme Park’ and removal of G&T Site 8 ‘Land West of Silverdale Business Park’ from the Policies Map. Modification of the Green Belt boundaries within site TB19 ‘Land South of Newcastle Golf Club’. Insertion of safeguarded transport route between TB19 ‘Land South of Newcastle Golf Club’ and KL13 ‘Keele Science Park, Phase 3’ on the Policies Map.



PM04 Rural Centre – Audley & Bignall End - Removal of AB12 'land east of Diglake Street' / AB33 'Land off Nantwich Road / Park Lane' from Policies Map.



PM05 – Rural Centre – Keele Village (with University Hub) Map - Removal of Site 8 ‘Land West of Silverdale Business Park’ from Policies Map. Alteration of development and Green Belt boundaries at site SP11 ‘Lyme Park’. Amendment to Green Belt Boundary at TB19 ‘Land South of Newcastle Golf Club’ and insertion of safeguarded land transport route between site TB19 ‘Land South of Newcastle Golf Club’ and KL13 ‘Keele Science Park, Phase 3’.

